



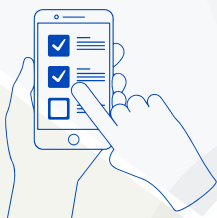
REPUBLIC OF RWANDA



BE COUNTED
BECAUSE YOU COUNT



NATIONAL INSTITUTE OF
STATISTICS OF RWANDA



5th

POPULATION AND HOUSING CENSUS

Rwanda, 2022



"Be counted because you count - Ibaruze kuko uri uw'agaciro"





POPULATION COUNT, EVOLUTION, DISTRIBUTION AND STRUCTURE

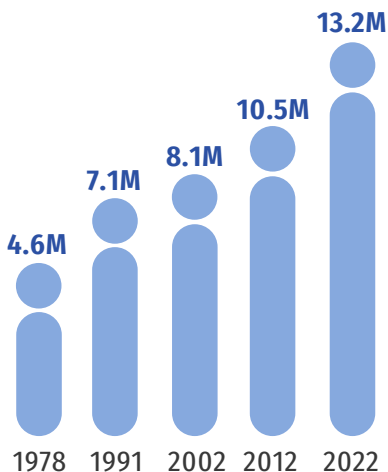


13,246,394

Total Population in 2022



The population increased from 10.5M in 2012 to 13.2M in 2022 with an annual population growth rate of 2.3%



NUMBER OF HOUSEHOLDS AND AVERAGE HOUSEHOLD SIZE



3,312,743
Households



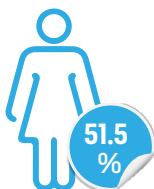
4.0 Average Household Size



DISTRIBUTION BY SEX, AREA OF RESIDENCE, AND BY PROVINCE



Male



Female



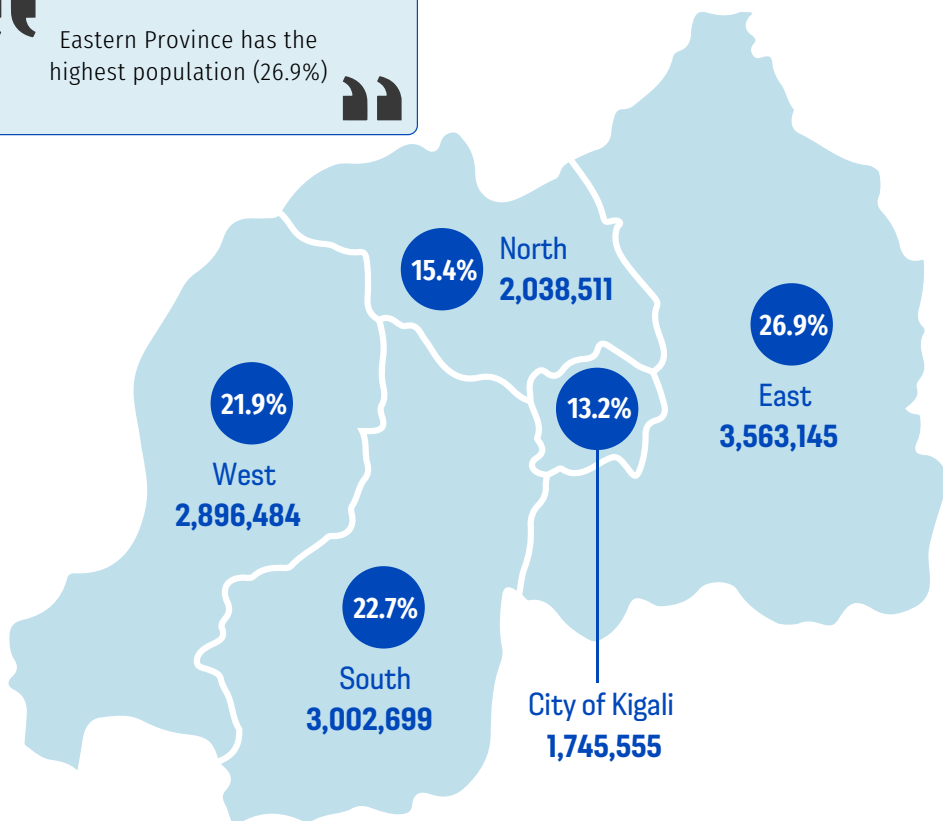
Rural



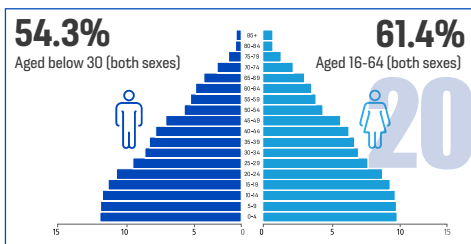
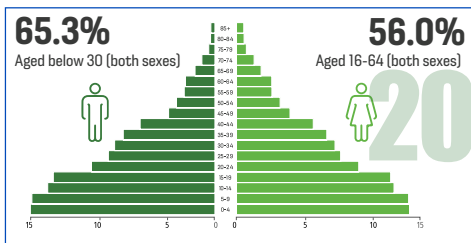
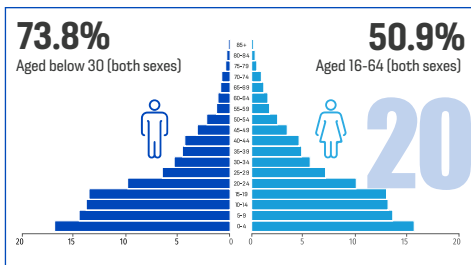
Urban



Eastern Province has the highest population (26.9%)



POPULATION AGE STRUCTURE (2002, 2012, 2022.....2050)



Young Population

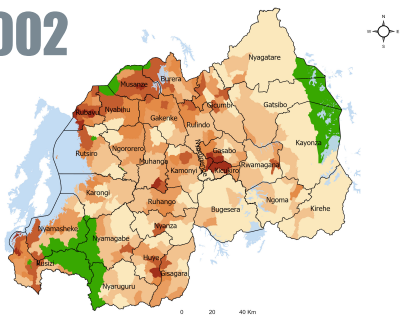
The proportion of young people (below 30 years) dropped from 70.3% in 2012 to 65.3% in 2022 and is expected to be 54.3% by 2050.

Population aged 16-64

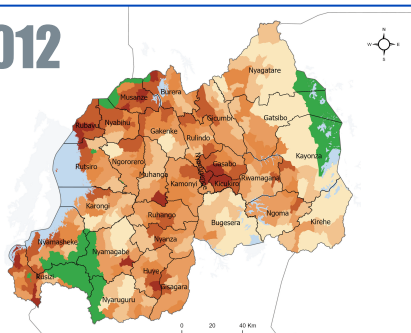
The proportion of population aged 16-64 increased from 53.4% in 2012 to 56.0% in 2022, and is expected to be 61.4% by 2050.

POPULATION DENSITY AND PROJECTED POPULATION

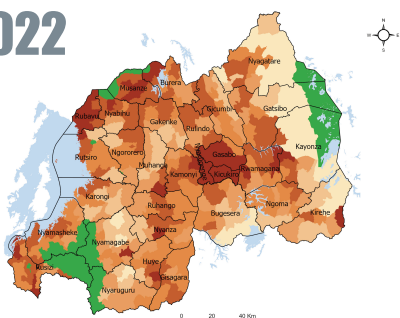
2002



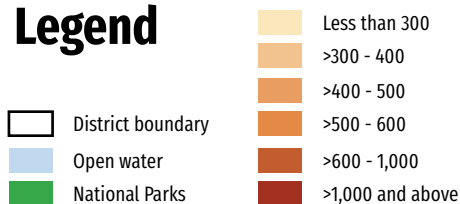
2012



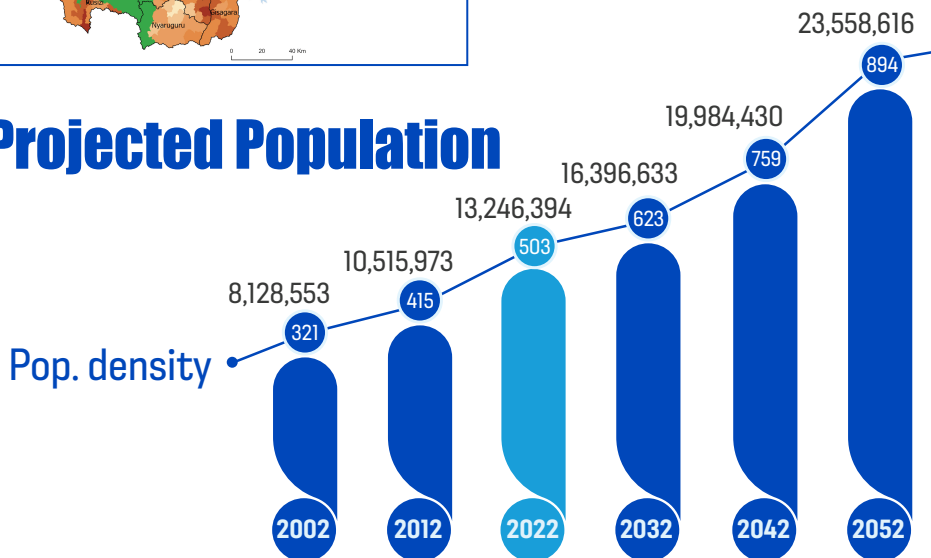
2022



Legend



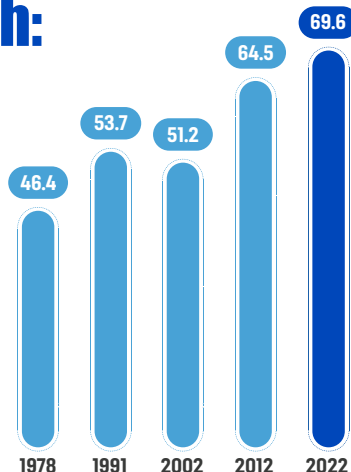
Projected Population



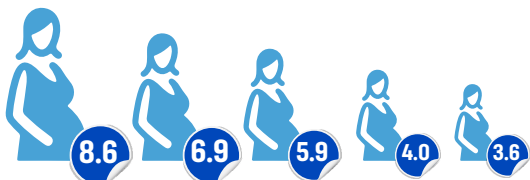


POPULATION DYNAMICS

Life Expectancy at birth:
Rwandans are
living longer
and healthier



Fertility Trend

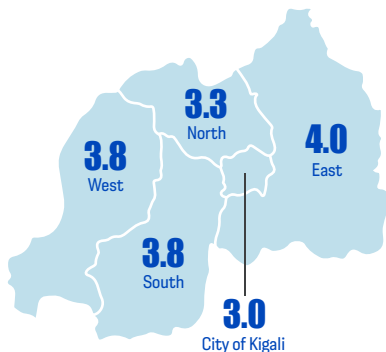


Year — 1978 — 1991 — 2002 — 2012 — 2022



The current total fertility rate (women aged 15-49) is 3.8 in rural areas and 3.2 in urban areas

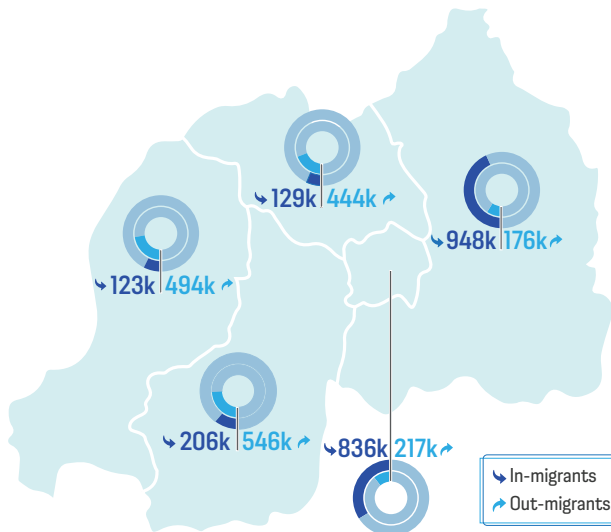
2022 Fertility by Province



INTERNAL LIFETIME MIGRATION



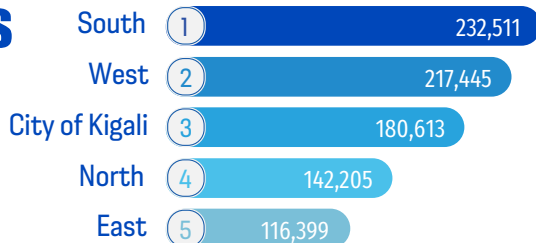
Southern Province has the highest number of lifetime out-migrants; while Eastern Province has the highest number of lifetime in-migrants.



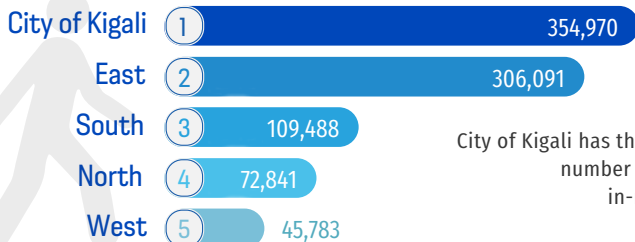
INTERNAL RECENT MIGRATION (5 RECENT YEARS)

Out-migrants

Southern Province has the highest number of recent out-migrants.



In-migrants



City of Kigali has the highest number of recent in-migrants.

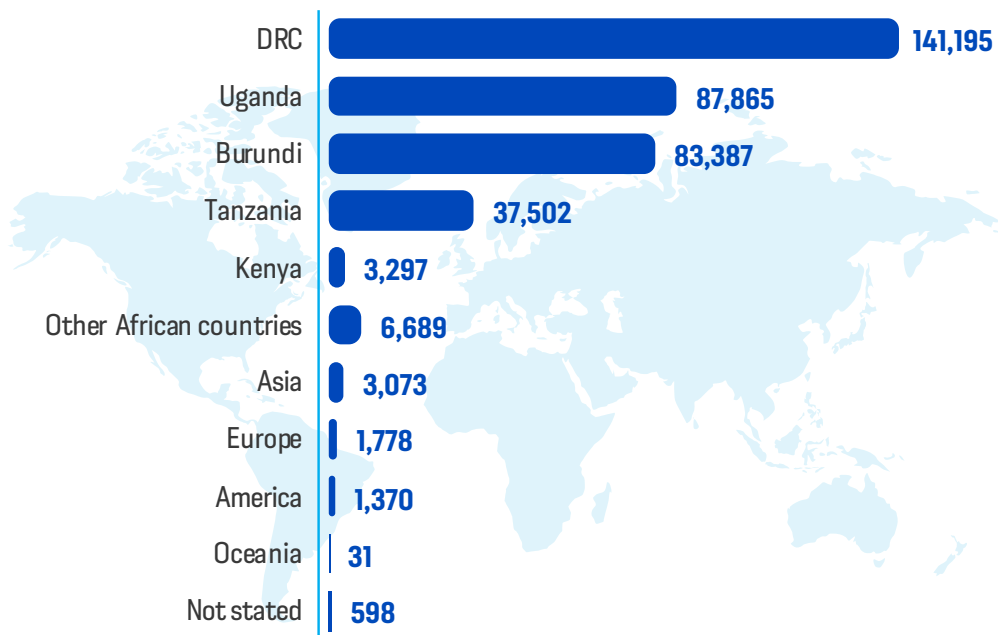
INTERNATIONAL MIGRATION



366,785 Life-time immigrants
to Rwanda

65,762 Recent immigrants to
Rwanda (5 recent years)

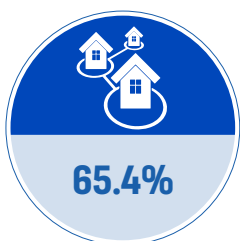
Life-time immigrants by country of birth



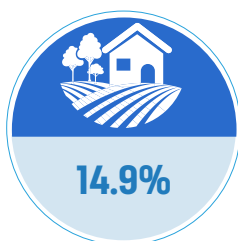


HOUSING CHARACTERISTICS

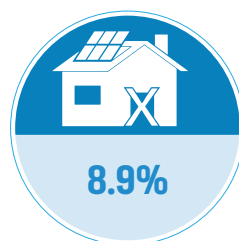
Distribution of Private Households by Type of Habitat:



Imidugudu
(Planned rural settlement)



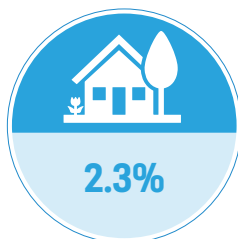
Dispersed/Isolated
housing



Spontaneous/
squatter housing



Modern planned
urban housing

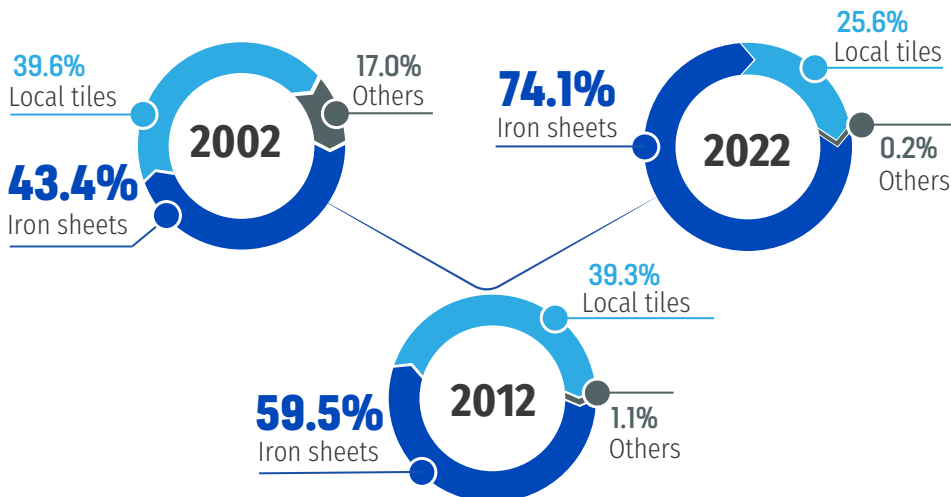


Old settlement



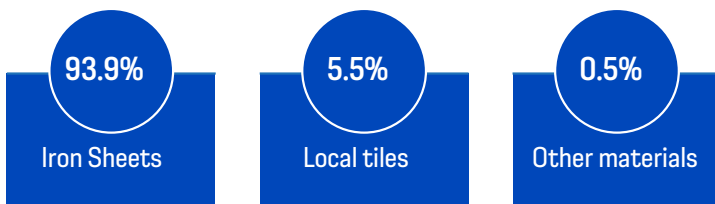
Integrated Model
Village

Trend at National Level (2002-2022)

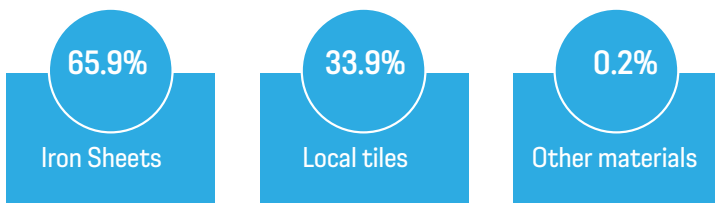


Distribution by area of residence

Urban



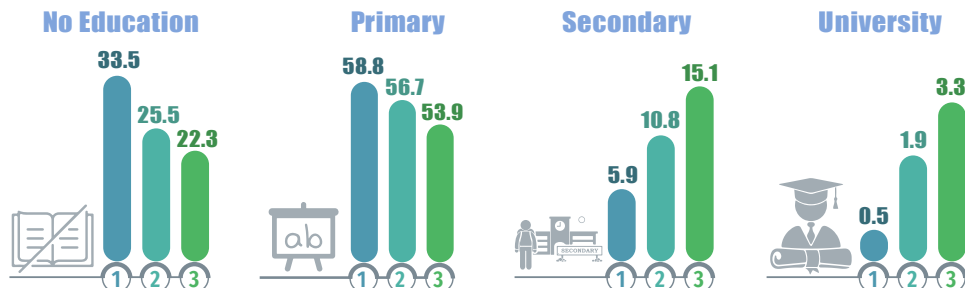
Rural





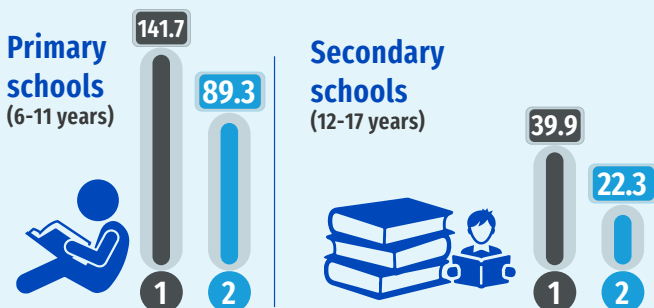
SOCIO ECONOMIC INDICATORS

TREND OF ATTENDED LEVEL OF EDUCATION (%)



Year — (1) 2002 — (2) 2012 — (3) 2022 —

Gross and net attendance rate (%)



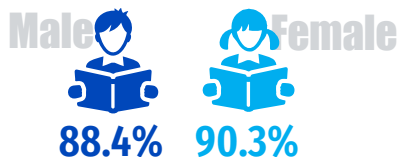
1 — Gross Attendance Rate — 2 — Net Attendance Rate

POPULATION AGED 6-11 CURRENTLY ATTENDING SCHOOL

National Level



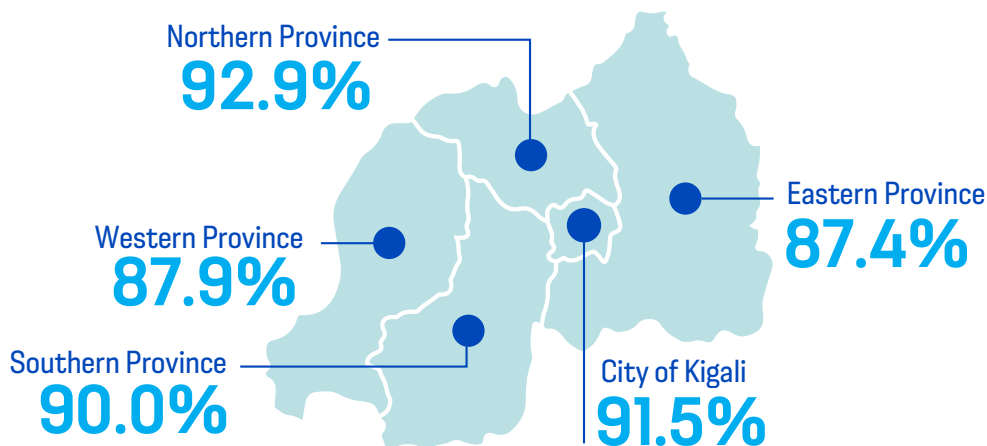
Attendance by sex



Attendance by area of residence

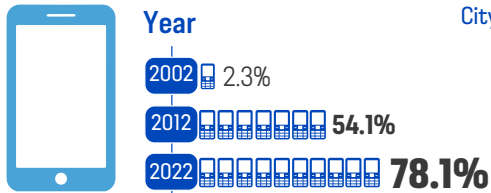


Attendance by province of residence

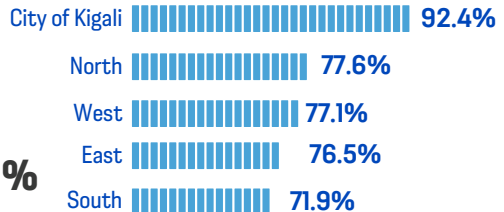


PRIVATE HOUSEHOLDS WITH A MOBILE PHONE

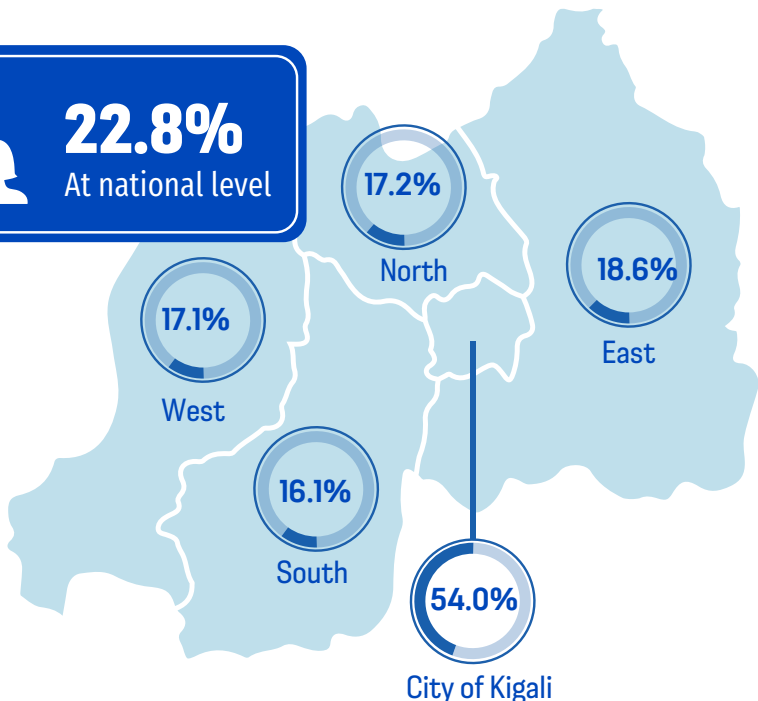
National Level



By Province



Private households whose at least one member used internet in last 12 months



DISTRIBUTION OF PRIVATE HOUSEHOLDS BY MAIN SOURCE OF LIGHTING



47.1%
Electricity
from REG



28.4%
Flashlight/Phone
Flashlight



13.9%
Solar power



4.2%
Firewoods



2.9%
Candles



1.6%
Kerosene/Paraffin/
Lantern lamp



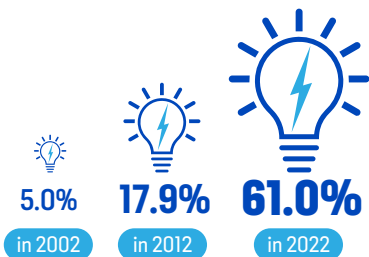
1.3%
Generator/
Batteries



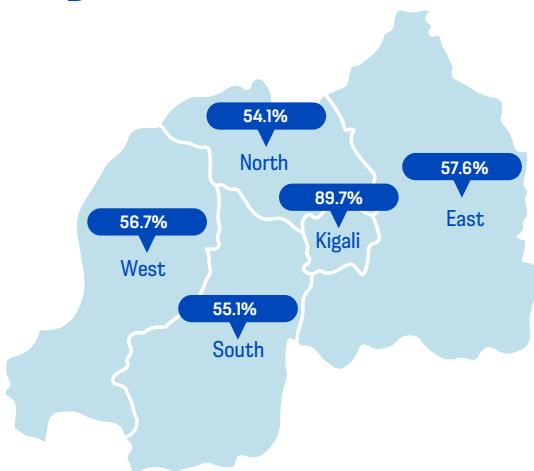
0.6%
Other

HOUSEHOLDS THAT USE ELECTRICITY AS THE MAIN SOURCE OF LIGHTING

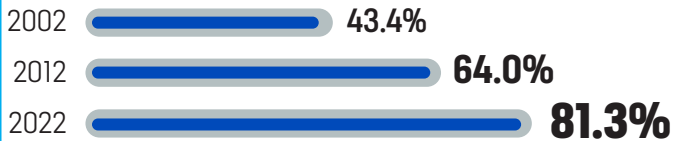
National Level



By Province



HOUSEHOLDS WITH A RADIO



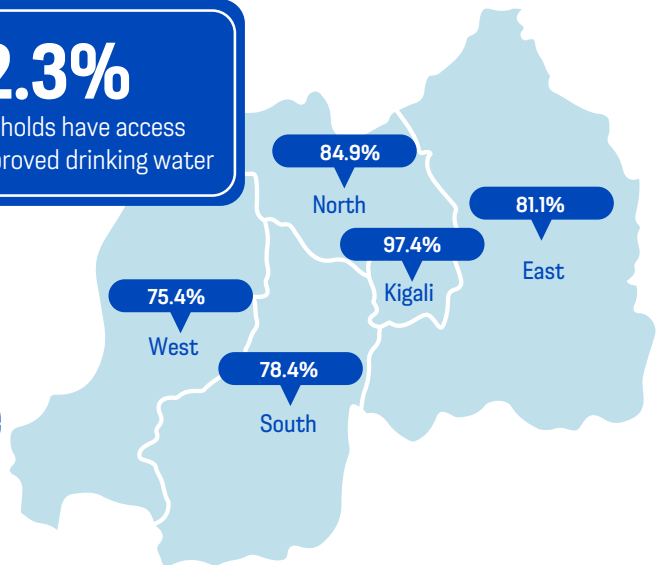
HOUSEHOLDS THAT HAVE ACCESS TO IMPROVED DRINKING WATER



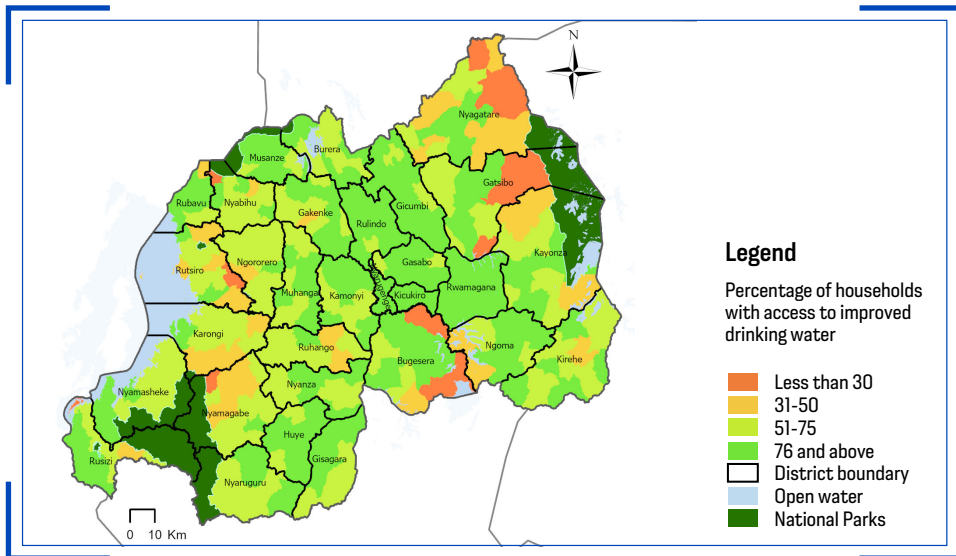
82.3%

Households have access to improved drinking water

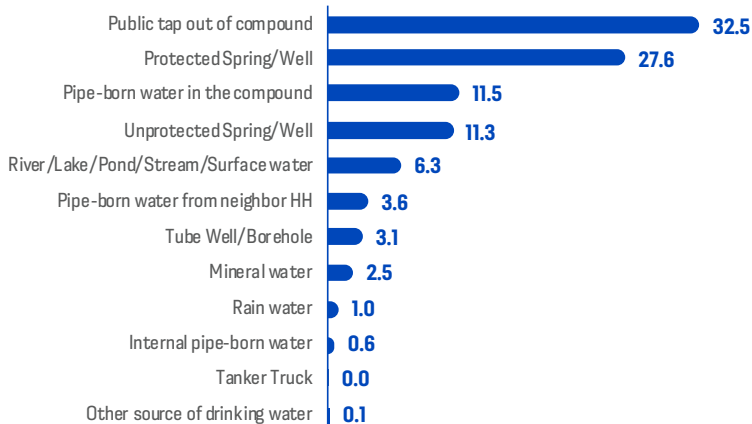
**Distribution
by province
of residence**



HOUSEHOLDS THAT HAVE ACCESS TO IMPROVED DRINKING WATER



Distribution (%) of Households by Main Source of Drinking Water



AGRICULTURE

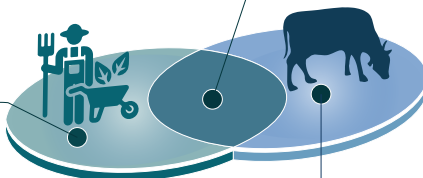


2,280,854 [69%]

households are engaged in agriculture activities (crop production or animal husbandry)

611,581 [26.8%]

crop farming only



1,463,347 [64.2%]

both crop farming and animal rearing

205,924 [9.0%]

animal rearing only

Data Quality Assessment:



98.7%

Net coverage rate



0.2%

Rate of erroneous inclusion

RESIDENT POPULATION BY AREA OF RESIDENCE, PROVINCE, AND DISTRICT

	Count			%		
	Total	Urban	Rural	Total	Urban	Rural
Rwanda						
Total	13,246,394	3,701,245	9,545,149	100	27.9	72.1
City of Kigali						
Total	1,745,555	1,517,168	228,387	100	86.9	13.1
Nyarugenge	374,319	315,899	58,420	100	84.4	15.6
Gasabo	879,505	714,069	165,436	100	81.2	18.8
Kicukiro	491,731	487,200	4,531	100	99.1	0.9
Southern Province						
Total	3,002,699	444,106	2,558,593	100	14.8	85.2
Nyanza	365,718	33,765	331,953	100	9.2	90.8
Gisagara	397,051	13,513	383,538	100	3.4	96.6
Nyaruguru	318,126	7,641	310,485	100	2.4	97.6
Huye	381,900	79,744	302,156	100	20.9	79.1
Nyamagabe	371,501	40,592	330,909	100	10.9	89.1
Ruhango	359,121	39,079	320,042	100	10.9	89.1
Muhanga	358,433	87,252	271,181	100	24.3	75.7
Kamonyi	450,849	142,520	308,329	100	31.6	68.4
Western Province						
Total	2,896,484	640,307	2,256,177	100	22.1	77.9
Karongi	373,869	33,542	340,327	100	9.0	91.0
Rutsiro	369,180	20,606	348,574	100	5.6	94.4
Rubavu	546,683	294,448	252,235	100	53.9	46.1
Nyabihu	319,047	78,027	241,020	100	24.5	75.5
Ngororero	367,955	18,142	349,813	100	4.9	95.1
Rusizi	485,529	162,165	323,364	100	33.4	66.6
Nyamasheke	434,221	33,377	400,844	100	7.7	92.3
Northern Province						
Total	2,038,511	353,729	1,684,782	100	17.4	82.6
Rulindo	360,144	38,110	322,034	100	10.6	89.4
Gakenke	365,292	14,788	350,504	100	4.0	96.0
Musanze	476,522	234,258	242,264	100	49.2	50.8
Burera	387,729	38,442	349,287	100	9.9	90.1
Gicumbi	448,824	28,131	420,693	100	6.3	93.7
Eastern Province						
Total	3,563,145	745,935	2,817,210	100	20.9	79.1
Rwamagana	484,953	180,056	304,897	100	37.1	62.9
Nyagatare	653,861	157,894	495,967	100	24.1	75.9
Gatsibo	551,164	55,351	495,813	100	10.0	90.0
Kayanza	457,156	65,071	392,085	100	14.2	85.8
Kirehe	460,860	29,039	431,821	100	6.3	93.7
Ngoma	404,048	37,297	366,751	100	9.2	90.8
Bugesera	551,103	221,227	329,876	100	40.1	59.9

MID-YEAR POPULATION PROJECTIONS

Year	High	Medium	Low
2022	13,206,731	13,206,731	13,206,731
2023	13,499,319	13,498,800	13,498,281
2024	13,798,853	13,797,269	13,795,682
2025	14,105,432	14,102,202	14,098,963
2026	14,418,935	14,413,447	14,407,938
2027	14,739,115	14,730,722	14,722,289
2028	15,065,675	15,053,700	15,041,654
2029	15,398,343	15,382,075	15,365,545
2030	15,736,871	15,715,568	15,693,624
2031	16,081,042	16,053,844	16,025,602
2032	16,430,660	16,396,633	16,361,136
2033	16,785,512	16,743,687	16,699,793
2034	17,145,330	17,094,708	17,041,224
2035	17,509,758	17,449,302	17,384,998
2036	17,878,252	17,806,818	17,730,592
2037	18,250,272	18,166,686	18,077,422
2038	18,625,320	18,528,370	18,424,924
2039	19,003,252	18,891,666	18,772,852
2040	19,383,418	19,255,890	19,120,504
2041	19,765,100	19,620,310	19,467,148
2042	20,147,778	19,984,430	19,812,126
2043	20,531,146	20,347,988	20,155,052
2044	20,915,032	20,710,772	20,495,676
2045	21,299,166	21,072,476	20,833,442
2046	21,683,330	21,432,846	21,167,914
2047	22,067,366	21,791,670	21,498,828
2048	22,451,252	22,148,856	21,826,012
2049	22,835,054	22,504,248	22,149,340
2050	23,218,784	22,857,676	22,468,638
2051	23,602,536	23,209,128	22,783,804
2052	23,986,420	23,558,616	23,094,764



